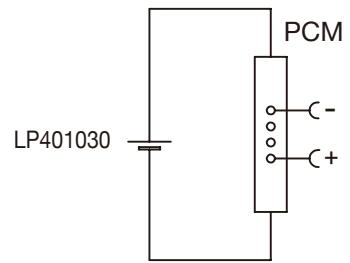


Circuit Diagram



# Specification

Lithium Polymer Battery Pack LP401030 90mAh 3.7V with Protection Circuit Module (PCM)  
 This data sheet describes the requirements and properties of lithium polymer rechargeable battery pack manufactured by LiPol Battery Co., Ltd - China

## Mechanical Characteristics

- Cell ▶ LP401030
- PCM ▶ Yes
- NTC ▶ No
- Configuration ▶ 1S1P
- Weight ▶ appr. 2g

## Electrical Specification

- Rated Capacity ▶ 90mAh min, 95mAh typ.
- Nominal Voltage ▶ 3.7V
- Wat-Hour Rating ▶ 0.33Wh
- Max. Operating Voltage Range ▶ 2.75V to 4.20V
- Max. Charge Voltage ▶ 4.2V ± 50mV
- Max. Charge Current ▶ 45mA
- Max. Continuous Discharge Current ▶ 90mA
- Discharge Cut Off ▶ 2.75V
- Internal Impedance ▶ <400mΩ
- Expected Cycle Life @ (0.5C/0.5C) @ 23±5°C ▶ 500 cycles ≥ 80%

## Cell Protection

- Overcharge Detection ▶ 4.275 ±50mV (0.7 to 1.3sec. delay, release 4.275V ±50mV)
- Overdischarge Detection ▶ 2.75V ±50mV (14 to 26msec. delay, resume 2.50V ±50mV)
- Overcurrent Detection ▶ 2A to 4.5A (8 to 16msec. delay)

## Ambient Conditions

- Charge Temp. Range ▶ 0 to +45°C
- Discharge Temp. Range ▶ -20 to +60°C
- Storage Temp. Range ▶ 1 year at -20 to +30°C >70%
- ▶ 3 months at -20 to +45°C >70%
- ▶ 1 month at -20 to +60°C >70%
- Humidity ▶ 65 ±20%RH

## Environmental and Safety

Please follow LiPol Handling and Safety Precautions for Lithium Polymer Battery. This battery meets the requirements of Battery Directives, and the battery parts are IEC 62133 & RoHS-Compliant. For more safety precautions and performance standards, please go to [www.lipolbattery.com/support.html](http://www.lipolbattery.com/support.html)

Mae in mm	Freimatoleranzen	Date	Name	<b>LiPol Battery</b>	Index	
All dimensions in mm	Generaltolerances	Erst. / Orig	23.05.2019			Xie Qingfang
Als Betriebsgeheimnis anvertraut, alle Rechte vorbehalten	up to 6 · 0,1 over 6 up to 30 · 0,2	Gepr./check	23.05.2019			Guo Daxia
Proprietary data, company confidential, all rights reserved.	over 30 up to 100 · 0,3 over 100 · 0,5	Benennung/ Designation		3	Zchg. / Dwg. Nr. FD_1500_10	
		LP401030				support@lipolbattery.com
		Origin:				